

METATRONIX

Innovative Intelligent Transport Systems

Certified System™
IATF 16949
Automotive



C-PAX3D

C-PAX3D is a device combining functionality of a counting sensor and a surveillance camera, embedded with a dual-lens and 3D technology, it provides average accuracy of more than 98% as on-board Passenger Counting System.

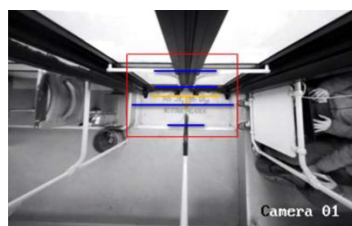
C-PAX3D was designed specifically for use in transportation. With minimum installation height at as low as 1,9 meters, it also comes with the choice of mounting kits allowing for installation in various environments, either in a flat or tilted position. The CPAX3D can distinguish between humans and objects such as luggage or bicycles, to deliver precise results in various real-life scenarios.

C-PAX3D can works in stand-alone mode or managed by MPPxPT for full ITxPT compliance.

- ✓ Stereo camera with dual-lens
- ✓ 3D depth measurement technology
- ✓ >98% average counting accuracy rate
- ✓ Bi-directional counting
- ✓ U-turns detection to avoid double counting
- ✓ Full accuracy even at 1.9m installation height
- ✓ PoE power supply
- ✓ Counting and monitoring in a single device
- ✓ ITxPT Standard protocol available.



Best Performance



C-PAX3D is ITxPT labelled



www.itxpt.org

Technical characteristics	
Camera Features	
Image Sensor	1/2.8" Progressive Sacn CMOS
Lens	2mm fixed
On-board Storage	MicroSD/SDHC/SDXC card slot
DNR	Digital WDR
Angle Adjustment	Pan: 0°, Tilt: 0° to 25°, Rotate: 0°
IR LED	Yes
IR Range	Up to 3 m
Video	
Compression	H.264, H.264+, H.265, H.265+
Maximum Frame Rate	30 fps @ 19200 x1200
Maximum Streams	3 simultaneous streams
Audio	
Audio Compression	G.711/G.722.1/G.726/MP2L2/PCM
Audio I/O	1 built-in mic IVS: 1 input (line in, two-core terminal block), 1 output (two-core terminal block), mono sound
Image	
Image Enhancement	HLC, BLC, 3D DNR, defog
Image Setting	Saturation, brightness, contrast, sharpness are adjustable by client software or web browser
Day/Night Switch	Day/Night/Auto/Schedule/Triggered by alarm input (-S)
General	
Connectors	M12 4 pin Connector for Network and PoE connection RS-485 interface DC 9-36 VDC reverse polarity protection DIDO 2 inputs, 2 outputs (max. 12 VDC, 30mA) DI Max. Voltage 30V Built-in micro SD/SDHC/SDXC slot, up to 256 GB
LED Indicator	System power and status indicator
Power Input	IEEE 802.3af PoE/ DC 7.5~48V
Dimensions	160x79x31 mm
Safety Certifications	CE, LVD, FCC Class B, VCCI, C-Tick, EN50155 T1, EN45545
Environmental	
Operating temp.	-30 °C ~ 60 °C
Humidity	95% non condensing
Protection	IP66, IK08
Physical Characteristics	
Housing	Metal
Dimensions	230 x 100 x 50 mm (LxWxH)
Weight	640 g
Certifications	
EN 50155-2017; E-MARK, R118, EN45545, 50121-3-2	

